



## STEP 1 – PRIOR TO INSTALLATION

- A) Bushwacker only** approves installing the flares according to these written instructions with the hardware provided. **WARNING:** Failure to install according to these instructions will invalidate the warranty. This includes, but is not limited to using alternative installation methods, hardware, or materials. **DO NOT USE:** Loctite, SuperGlue, or similar products on the hardware or the flares.
- B) Fit:** Verify the fit of the flares to vehicle. (Some filing, sanding, or cutting may be necessary to ensure proper fit).
- C) Painting:** (Optional) if paint is desired it must be done prior to installing flares on vehicle. Clean outer surface with a good grade degreaser. **DO NOT USE LACQUER THINNER OR ENAMEL REDUCER AS A DEGREASER.** Wipe outer surface thoroughly with a tack rag prior to paint. Application of plastic adhesion promoter for ABS plastic as per your paint system manufacturer's recommendations is required. Paint flares using a high quality enamel, or polyurethane automotive paint. If painting edge trim (not recommended), use a flex additive.
- D) Performance:** Using larger Tires may increase the area required to turn the vehicle. Some Tire/Rim combinations may require lowering bump stops and or installing steering stops to prevent tire from contacting flare.
- E) Exhaust System:** Modifications may be necessary to maintain a minimum 4" clearance between flares and exhaust pipes. (Exhaust gases should not vent directly onto flares)
- F) Metal Protection:** All exposed fasteners and bare metal should be treated with rust resistant paint **BEFORE** installing flares. Spray inner fender wells with undercoating **AFTER** flare attachments have been completed.
- G) Decals:** Flares may interfere with existing decals on vehicle. If you wish, remove decals prior to installation of flares.

# Jeep® Flat Style Fender Flares Rear Pair

Rear Part #10064-07

Rev-3 10/25/2013

For complete fitment info visit : [www.bushwacker.com](http://www.bushwacker.com)

## TOOLS FOR EASY INSTALLATION:

- Utility Knife
- #2 Phillips Drive Bit
- Electric Drill
- 1/4" & 7/64" Drill Bits
- #2 Phillips Screwdriver
- Socket Wrench
- 1/4" Socket
- 7mm, 8mm & 10mm Sockets
- Scratch Awl
- Angle Grinder
- Soft Wiping Cloth/Shop Towels
- Pry bar/Claw Hammer
- Safety Glasses
- Grease Pencil/Marker
- Partner/Helper
- Putty Knife/Molding Remover
- Ruler/Measuring Tape

**NOTE: These instructions involve cutting parts of the vehicle. It is important to read all instructions prior to cutting and installing of flares.**

## LIMITED LIFETIME WARRANTY AGAINST ANY MANUFACTURING DEFECTS

- To claim a warranty, you must provide Proof of Purchase.

## Included in Hardware Kit:

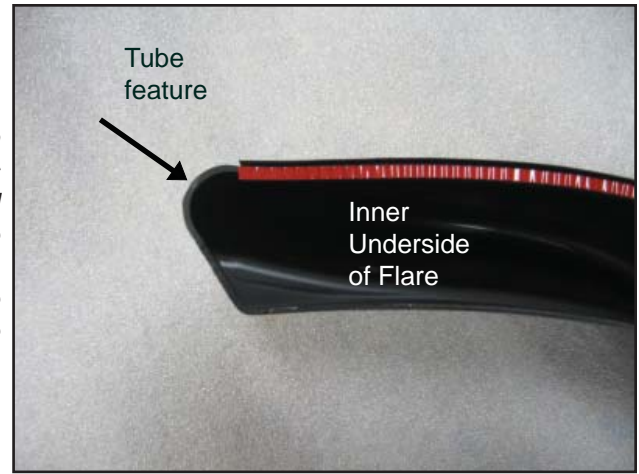
- |  |  |  |  |   |   |  |
|--|--|--|--|---|---|--|
| 1. <br>AD1-0008,<br>ALCOHOL PREP<br>PAD,<br>2 pcs         | 2. <br>CL1-0022,<br>#10 "U" Clip,<br>12 pcs                       | 3. <br>ET1-0002,<br>Edge Trim Tool,<br>1 pc           | 4. <br>GP1-0006,<br>Wiper Style (2-<br>tape) Edge Trim,<br>119 inches | 5. <br>NU1-0010,<br>M5 x.8 Serrated<br>Flange Hex Nut,<br>6 pcs     | 6. <br>RV1-P001,<br>1/4" Black Nylon<br>Retainer,<br>4 pcs | 7. <br>SP1-0009,<br>3/8" x 5/8" x .187"<br>Neo Black Spacer,<br>4 pcs |
| 8. <br>SW1-0016,<br>8 x 1-1/2"<br>Phillips Screw,<br>4 pcs | 9. <br>SW1-0053,<br>M5-.8 x 25mm<br>Phillips Mach Screw,<br>6 pcs | 10. <br>SW1-0056,<br>#8 x 3/4"<br>PH Screw,<br>12 pcs | 11. <br>WA1-0003,<br>#10 SAE<br>1/2" Flat Washer,<br>6 pcs            | 12. <br>WA1-0014,<br>#10 SAE SS Black<br>1/2" Flat Washer,<br>4 pcs |   |  |

**STEP 2 - EDGE TRIM INSTALLATION (DO NOT INSTALL EDGE TRIM ON THE SMALLER INNER PIECES! ONLY THE FLARE PIECES NEED IT!)**

The edge trim for this application is double-tape edge trim so special care needs to be taken while installing. There is red vinyl backing on the inside of the edge trim where it will adhere to the flare and red vinyl backing on the outside where it will adhere to the vehicle. The following steps only concern where the edge trim will adhere to the flare. Additional edge trim installation instructions are included during the rest of the installation process.

A. Peel two to three inches of red vinyl backing away from edge trim tape. Applying the adhesive side of the edge trim to the inner side of the flare, affix the edge trim to the top edge of the flare (the portion that comes in contact with the vehicle). Stop at tube feature of flare. **Picture 1 for tube feature reference**

B. Press edge trim into place along the top edge of the flare in one-foot increments, pulling red vinyl backing free as you continue to work your way around the top edge of the flare. **Picture 2 for additional edge trim orientation**



**Picture 1**



**Picture 2**

**Rear Flare Installation Procedures (Passenger's Side):**



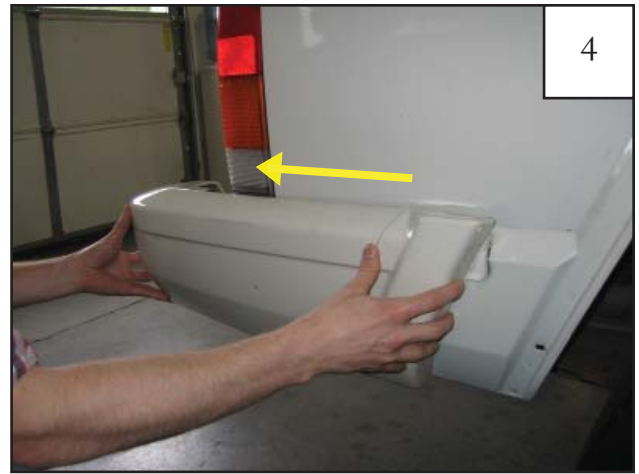
Remove the factory rear flare starting with the lowest factory fasteners. Use the following socket & wrench for factory fasteners: **(84-96 Model Years = 7mm)** **(97-01 Model Years = 1/4")**



**(For 97-01 Model Years Only)** Remove the factory bumper rear fastener using a 10mm socket & wrench.



Using a 10mm socket & wrench, remove the remaining factory fasteners on the factory front flare. (7 locations) **NOTE: (For 97-01 Model Years Only) Only 5 fastener locations.**



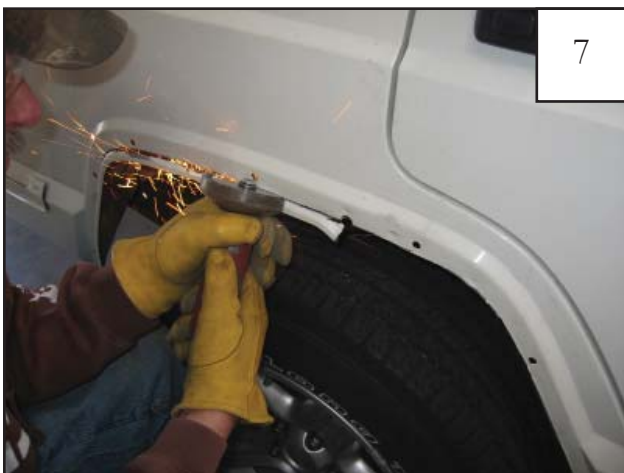
**(For 97-01 Model Years Only)** Remove the rear factory bumper piece by sliding it toward the rear of the vehicle. Save for optional trimming and reinstallation.



With the factory flares removed, thoroughly clean the exposed metal fender with a damp cloth and dry. **(For 97-01 Model Years Only)** Pop out two factory panel retainers to remove splash shield.



Use a grease pencil or marker to mark a line on the style line closest to the wheel well of the fender for trimming. Ensure that marked line does not go past the first style line. All factory mounting holes should remain intact after trimming. **(For 97-01 Model Years Only)** The larger factory hole indicated in picture may be cut in half.



Use a cut off saw to cut the rear fender along marked line.



Fender should look like image shown after trimming.

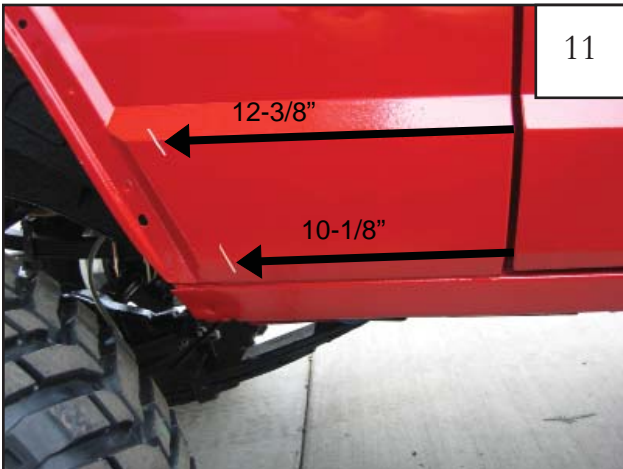




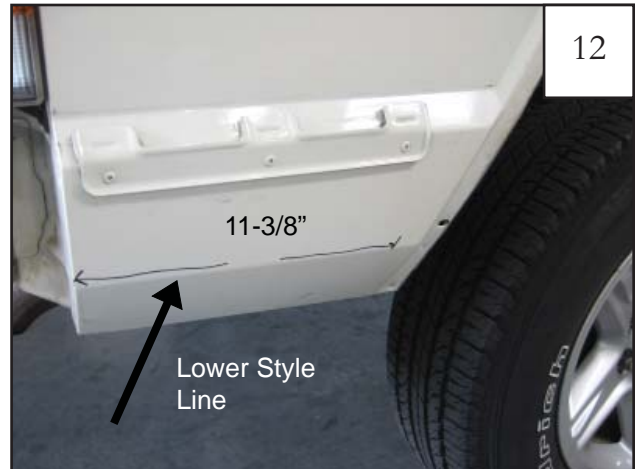
Locate the flat style flare passenger side rear inner pieces marked P3 & P4. The driver side rear inner pieces are marked D3 & D4.



**(For 4-Door Vehicles Only)** Use a grease pencil or removable marker to make a line parallel with the door seam  $\frac{3}{8}$ " away from the door seam.



**(For 2-Door Vehicles Only)** Use a grease pencil or removable marker to make a line parallel with the wheel well opening  $12\text{-}\frac{3}{8}$ " from the door edge seam along style line and  $10\text{-}\frac{1}{8}$ " on lower style line.



Use a grease pencil or removable marker to mark a line parallel with the wheel well opening  $11\text{-}\frac{3}{8}$ " away from the rear edge of sheet metal at lower style line location shown above.



Position inner piece P3 (D3 for driver side) on fender, aligning top two holes in the inner piece with existing factory holes in sheet metal. Slide washer onto M5-.8 machine screw. Insert a screw/washer assembly through inner flare piece and fender and secure with a flange nut. *Only hand tighten at this time.*



Align outer edge of inner piece P3 (D3 for driver side) with the measuring lines made in Step 10/11. Use a grease pencil or marker to mark the lower front hole location on the sheet metal.



15

Align outer edge of inner piece P3 (D3 for driver side) with the measuring lines made in Step 10/11. Use a scratch awl to mark the upper front hole location on the sheet metal making sure awl is perpendicular to sheet metal and inner piece.



16

Position inner piece P4 (D4 for driver side) on fender, aligning top hole in the inner piece with existing factory hole in sheet metal. Slide washer onto M5-.8 machine screw. Insert a screw/washer assembly through inner flare piece and fender and secure with a flange nut. *Only hand tighten at this time.*



17

Align outer edge of inner piece P4 (D4 for driver side) with the measuring line made in Step 12. Use a grease pencil or marker to mark the lower rear hole location on the sheet metal.



18

Align outer edge of inner piece P4 (D4 for driver side) with the measuring line made in Step 12. Use a scratch awl to mark the upper rear hole location on the sheet metal making sure awl is perpendicular to sheet metal and inner piece.



19

Remove inner pieces from rear fender. Using a 7/64" drill bit, drill through sheet metal on upper two locations marked with a scratch awl in steps 15 & 18.



20

Using a 1/4" drill bit, drill through sheet metal on lower two locations marked in steps 14 & 17. Predrill with a smaller drill bit if desired.



21

Reinstall inner pieces P3 & P4 (D3 & D4 for driver side) by aligning the parts with the upper factory holes and newly drilled holes. Attach inner piece to the sheet metal with a screw/washer and flange nut in upper hole locations. (3 locations) *Only hand tighten at this time.*



22

Position inner pieces using supplied tuftlocks on lower two hole locations drilled in the sheet metal with the 1/4" drill bit. *Do not fully fasten as inner pieces will be removed after marking for trimming.*



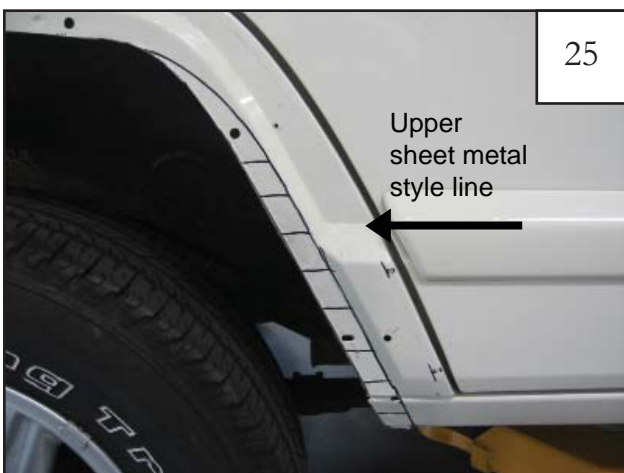
23

Using a grease pencil or marker, use the inner profile of the installed inner pieces as a guide to mark the sheet metal for trimming.



24

At end of inner pieces extend trimming line so that it is parallel with the wheel well opening instead of following inner piece curvature.



25

Remove inner pieces. Starting approximately 3" above upper sheet metal style line mark horizontal lines 1.5" apart using a grease pencil or marker.



26

Lines marked for trimming should look like image shown.





Use a cut off saw to cut the front fender along marked line. *Do not cut any sheet metal past where the horizontal lines were marked in step 25.*



Fender should look like image shown after trimming and hammering.



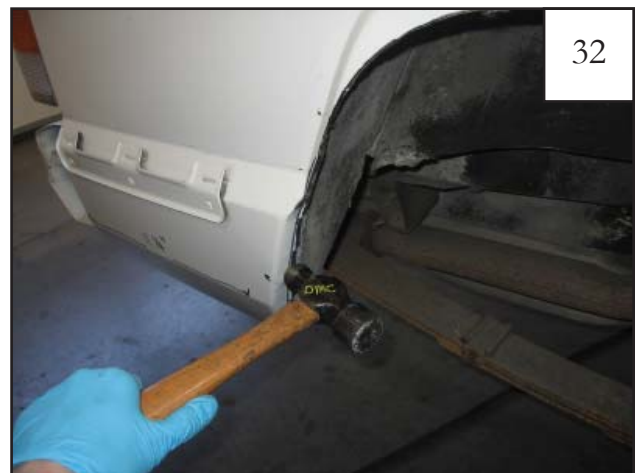
Use cut off saw to cut along horizontal lines. Do not cut past profile line made in step 10/11.



Use pliers to bend back horizontal sheet metal tabs.



Use a small sledge hammer to flatten out sheet metal tabs. Remove the tire if desired to make hammering easier. *Avoid bending or distorting outer sheet metal.*



Use a ball peen hammer to further flatten and even out sheet metal.



33

Use an angle grinder to sand and even out trimmed wheel well sheet metal. Use caulking or primer to seal any exposed sheet metal if desired for rust prevention.



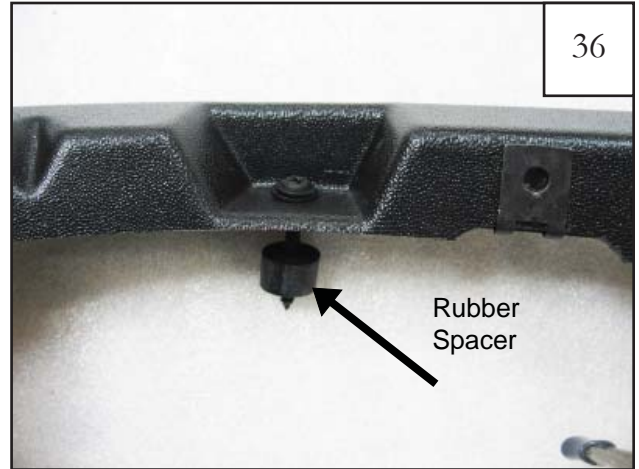
34

Fender should look like image shown after trimming and hammering.



35

Install a speed clip at each clip location on the inner pieces, centering them on the predrilled holes. (6 locations)



36

Install screw, washer, spacer combo through inner pieces P3 & P4 (D3 & D4 for driver's side) corresponding with 7/64" holes drilled in step 19. Rubber spacer should be on sheet metal side of inner piece.



37

Position inner pieces on fender and tighten screw, washer, spacer combo using a #2 Phillips bit. *Do not overtighten.*



38

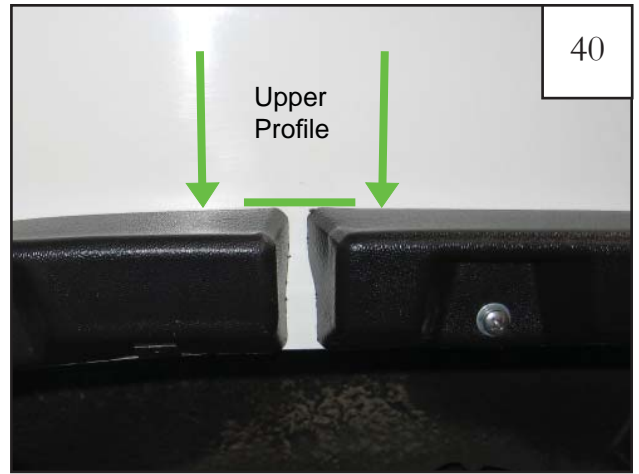
Install flange nuts using a 5/16" socket and wrench and using a #2 Phillips bit for the M5-.8 screws in upper two holes of P3 and upper single hole of P4 (D3 & D4 for driver's side).





39

Install tuflocks in two lowest hole locations on inner pieces P3 & P4 (D3 & D4 for driver's side).



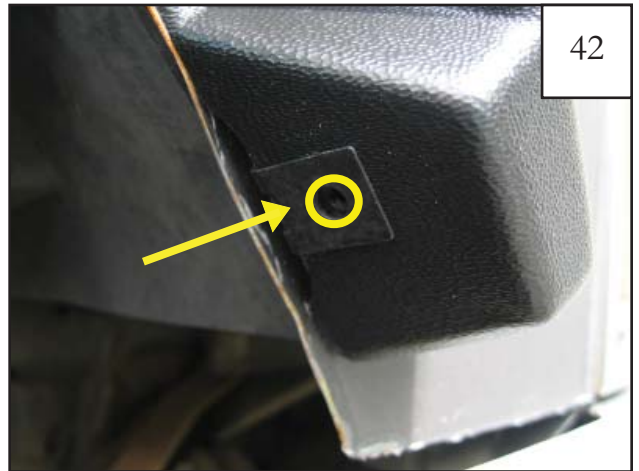
40

Make sure upper profile of inner pieces match. If not, loosen and realign.



41

Inner pieces installed.



42

Before installing the outer flare, make sure that the speed clips on the inner pieces are centered over the predrilled holes.



43

Peel back 1-2" of red liner on each end of the edge trim and bend toward the outside of the flare.



44

Use one supplied alcohol prep pad to clean the *sheet metal* above each inner piece in preparation to tape the edge trim to the sheet metal. *This must be done for proper flare installation.*



45

Place the outer flare over the inner pieces and push until snug against the sheet metal.



46

Use a scratch awl (or another pointed tool) to line up the speed clips with the outer flare holes (6 locations). If needed, use a flashlight to better locate the speed clips.



47

Hold flare in place on fender and start a #8 pan head screw into *each* hole location and through speed clip on inner structure (6 places). *Do not tighten.*



48

Tighten the #8 pan head screws by *firmly* pressing the flare toward the vehicle *while* tightening.



49

Peel outer tape liner from the double-tape edge trim. Push down *lightly* on the fender flare to create a small gap between the sheet metal and the edge trim. This makes it easier to pull the red liner.



50

Starting at one end, place the flat edge of the supplied edge trim tool between the lip of the edge trim and the surface of the flare then slide along the edge trim while pressing it in toward the vehicle surface to further ensure proper adhesion.



51

Use the hooked end of the edge trim tool to check for full adhesion. Do this by sliding it along the top of the edge trim to visually verify that the tape is adhered to the vehicle surface. Repeat step 50 if tape is not fully adhered to the vehicle surface.



52

**(For 97-01 Model Years Only)** If desired, trim bumper piece to fit with flare and reinstall.



53

Completed rear flare installation.