



STEP 1 – PRIOR TO INSTALLATION

- A) Bushwacker only** approves installing the flares according to these written instructions with the hardware provided. **WARNING:** Failure to install according to these instructions will invalidate the warranty. This includes, but is not limited to using alternative installation methods, hardware, or materials. **DO NOT USE:** Loctite, SuperGlue, or similar products on the hardware or the flares.
- B) Fit:** Verify the fit of the flares to vehicle. (Some filing, sanding, or cutting may be necessary to ensure proper fit).
- C) Painting:** (Optional) if paint is desired it must be done prior to installing flares on vehicle. Clean outer surface with a good grade degreaser. **DO NOT USE LACQUER THINNER OR ENAMEL REDUCER AS A DEGREASER.** Wipe outer surface thoroughly with a tack rag prior to paint. Application of plastic adhesion promoter for ABS plastic as per your paint system manufacturer's recommendations is required. Paint flares using a high quality enamel, or polyurethane automotive paint. If painting edge trim (not recommended), use a flex additive.
- D) Performance:** Using larger Tires may increase the area required to turn the vehicle. Some Tire/Rim combinations may require lowering bump stops and or installing steering stops to prevent tire from contacting flare.
- E) Exhaust System:** Modifications may be necessary to maintain a minimum 4" clearance between flares and exhaust pipes. (Exhaust gases should not vent directly onto flares)
- F) Metal Protection:** All exposed fasteners and bare metal should be treated with rust resistant paint **BEFORE** installing flares. Spray inner fender wells with undercoating **AFTER** flare attachments have been completed.
- G) Decals:** Flares may interfere with existing decals on vehicle. If you wish, remove decals prior to installation of flares.

GMC "OE" Style® Fender Flares Rear Pair

Rear Part #40084-02

Rev-3 8/28/2013

For complete fitment info visit : www.bushwacker.com

TOOLS FOR EASY INSTALLATION:

- 7mm Socket
- Phillips Screwdriver
- Grease Pencil
- Awl (Optional)

LIMITED LIFETIME WARRANTY AGAINST ANY MANUFACTURING DEFECTS

- To claim a warranty, you must provide Proof of Purchase.

Included in Hardware Kit:

- | | | | | | | | | | | | | | |
|----|---|----|---|----|---|----|---|----|--|----|---|----|---|
| 1. |  | 2. |  | 3. |  | 4. |  | 5. |  | 6. |  | 7. |  |
| | CL1-0005,
Dacromet "U"
Spring Clip,
12 pcs | | ET1-0002,
Edge Trim Tool,
1 pc | | GP1-0008,
Duro (NC02/S 70)
Edge Trim,
194 inches | | MT1-0002,
1" x1" x.017"
Black Tab,
12 pcs | | NU1-0007,
#12 "U" Spring
Nut,
4 pcs | | SW1-0050,
10 x 5/16 Phillips
Truss Screw,
12 pcs | | SW1-0057,
#14 x 3/4" Phillips
Truss Tap Screw,
4 pcs |

STEP 2 - EDGE TRIM INSTALLATION

A. Peel two to three inches of red vinyl backing away from Edge Trim (GP1-0005) tape. Applying the adhesive side of the edge trim to the inner side of the flare, affix the edge trim to the top edge of the flare (the portion that comes in contact with the vehicle).

B. Press edge trim into place along the top edge of the flare in one-foot increments, pulling red vinyl backing free as you continue to work your way around the top edge of the flare.



Rear Flare Installation Procedures (Driver's Side):

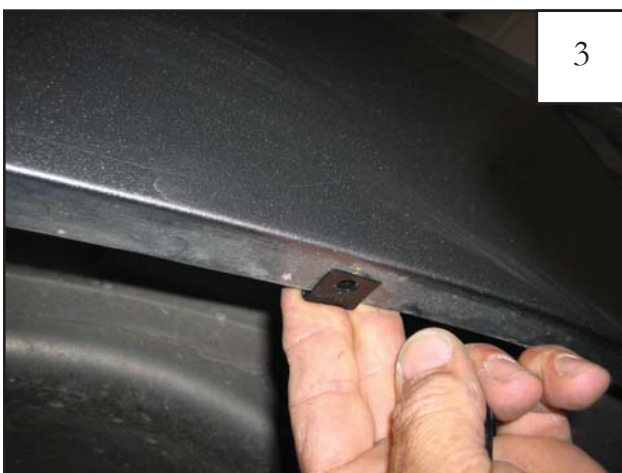


Holding flare in position on fender, use a grease pencil to mark six hole locations.

NOTE: Rear flares look similar. Verify that you have the correct side prior to installation.



Six hole locations.



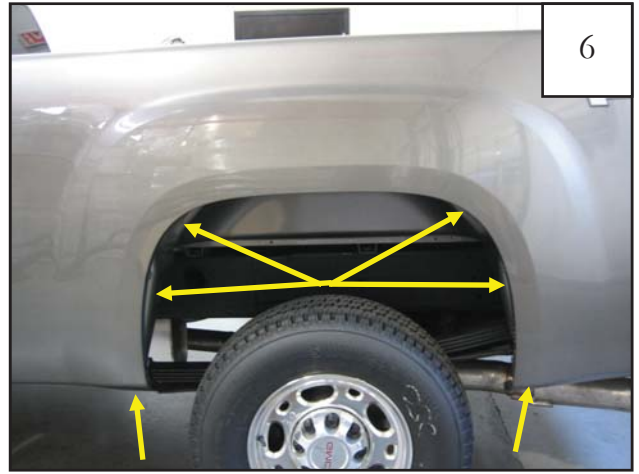
Slide a supplied Plastic Clip over two top factory holes. Clips may need to be adjusted to align with holes in flare. *NOTE: the raised collar on the clip should face upward into the interior of the fender.*



Plastic Clip locations.



Center a supplied Black Plastic Tab over the six marks made in Step 1, aligning edge of tab with inside of fender lip (tab may extend over outside of fender).



Black Plastic Tab locations.



Slide a supplied "S" Clip over each black tab. Clips may need to be adjusted to align with holes in flare. Clips on bottom may need to be pinched in order to stay in position on fender.



Reposition flare on fender. Start a supplied #14 Truss Head Screw through each topmost hole in the flare, and into each Plastic Clip installed in Step 3.

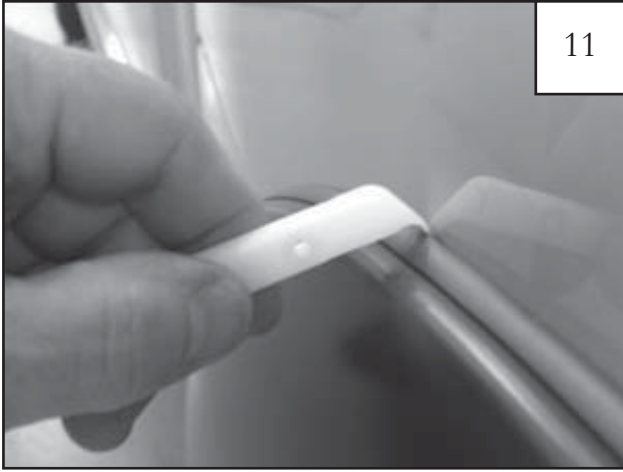


Start a supplied Serrated Flange Screw through each of the remaining holes and into each "S" Clip installed in Step 7. If needed, use awl to locate holes. *NOTE: It is helpful to install the two bottom screws first.*



Verify fit and tighten all screws.

Edge Trim Tool Procedures:



Using supplied Edge Trim Tool (ET1-0002), seat edge trim against vehicle by hooking curved end under edge trim at one end of flare. Next, slide around outer edge of flare to the other end.



Using flat end of supplied Edge Trim Tool (ET1-0002), seat edge trim against flare by inserting straight end between edge trim and flare at one end. Next, slide around entire edge to the other end.