



## STEP 1 – PRIOR TO INSTALLATION

- A) Bushwacker only** approves installing the flares according to these written instructions with the hardware provided. **WARNING:** Failure to install according to these instructions will invalidate the warranty. This includes, but is not limited to using alternative installation methods, hardware, or materials. **DO NOT USE:** Loctite, SuperGlue, or similar products on the hardware or the flares.
- B) Fit:** Verify the fit of the flares to vehicle. (Some filing, sanding, or cutting may be necessary to ensure proper fit).
- C) Painting:** (Optional) if paint is desired it must be done prior to installing flares on vehicle. Clean outer surface with a good grade degreaser. **DO NOT USE LACQUER THINNER OR ENAMEL REDUCER AS A DEGREASER.** Wipe outer surface thoroughly with a tack rag prior to paint. Application of plastic adhesion promoter for ABS plastic as per your paint system manufacturer's recommendations is required. Paint flares using a high quality enamel, or polyurethane automotive paint. If painting edge trim (not recommended), use a flex additive.
- D) Performance:** Using larger Tires may increase the area required to turn the vehicle. Some Tire/Rim combinations may require lowering bump stops and or installing steering stops to prevent tire from contacting flare.
- E) Exhaust System:** Modifications may be necessary to maintain a minimum 4" clearance between flares and exhaust pipes. (Exhaust gases should not vent directly onto flares)
- F) Metal Protection:** All exposed fasteners and bare metal should be treated with rust resistant paint **BEFORE** installing flares. Spray inner fender wells with undercoating **AFTER** flare attachments have been completed.
- G) Decals:** Flares may interfere with existing decals on vehicle. If you wish, remove decals prior to installation of flares.

# GMC Extend-A-Fender® Fender Flares Rear Pair

Rear Part #40108-02

Rev-3 8/30/2013

For complete fitment info visit : [www.bushwacker.com](http://www.bushwacker.com)

## TOOLS FOR EASY INSTALLATION:

- #2 Phillips Driver
- Grease Pencil
- Awl (or similar pointed tool)
- Partner/Helper (optional)

## LIMITED LIFETIME WARRANTY AGAINST ANY MANUFACTURING DEFECTS

- To claim a warranty, you must provide Proof of Purchase.

## Included in Hardware Kit:

- |    |   |    |   |    |   |    |   |    |  |    |   |    |   |
|----|---|----|---|----|---|----|---|----|--|----|---|----|---|
| 1. |  | 2. |  | 3. |  | 4. |  | 5. |  | 6. |  | 7. |  |
|    | CL1-0022,<br>#10 "U" Clip,<br>4 pcs   |    | CL1-0005,<br>Dacromet "U"<br>Spring Clip,<br>8 pcs                                  |    | SW1-0050,<br>10 x 5/16 Phillips<br>Truss Screw,<br>8 pcs                            |    | SW1-0058,<br>#10 x 5/8" Phillips<br>SS Truss Screw,<br>4 pcs                        |    | MT1-0014,<br>1" x 1.5" x .01"<br>Black Tab,<br>8 pcs                                 |    | ET1-0002,<br>Edge Trim Tool,<br>1 pc  |    | GP1-0008,<br>Duro (NC02/S 70)<br>Edge Trim,<br>193 inches                             |

## STEP 2 - EDGE TRIM INSTALLATION

A. Peel two to three inches of red vinyl backing away from Edge Trim (GP1-0008) tape. Applying the adhesive side of the edge trim to the inner side of the flare, affix the edge trim to the top edge of the flare (the portion that comes in contact with the vehicle).

B. Press edge trim into place along the top edge of the flare in one-foot increments, pulling red vinyl backing free as you continue to work your way around the top edge of the flare.



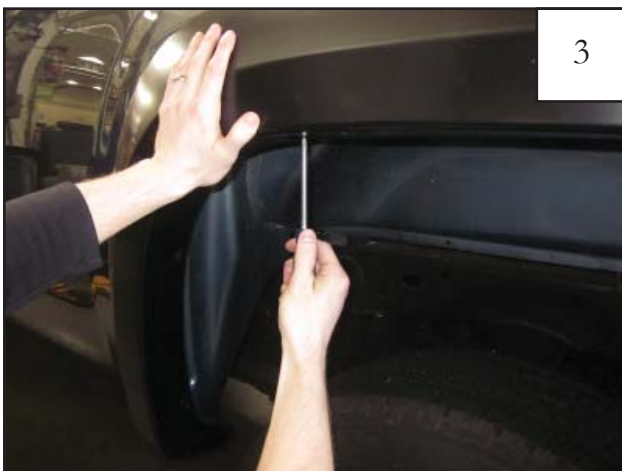
## Rear Flare Installation Procedures (Driver's Side):



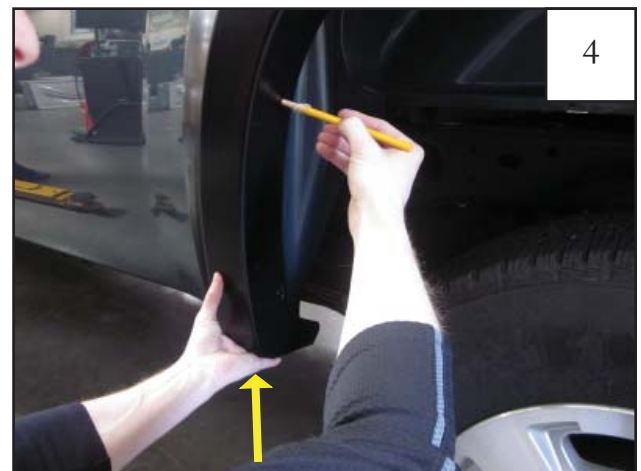
Remove factory mudflap if applicable. Remove and discard two factory installed plastic retainers in top (outer) hole locations of sheet metal (ignore center location). *NOTE: Not all vehicles have plastic retainers installed.*



Center a supplied Clip (CL1-0022) over the two holes in Step 1. Clips may need to be adjusted to align with holes in flare. *Note: The raised collar on the Clip should face upward into the interior of the fender.*



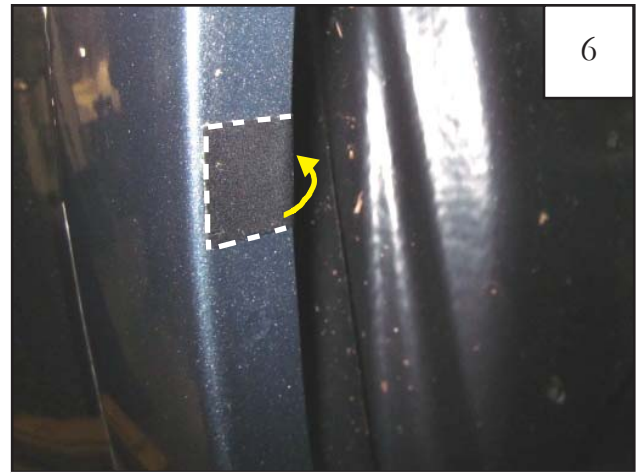
Align flare on vehicle and start a supplied screw (SW1-0058) through the two uppermost holes in the flare and into each clip installed in Step 2. **DO NOT FULLY TIGHTEN SCREWS AS THEY WILL BE UNINSTALLED**



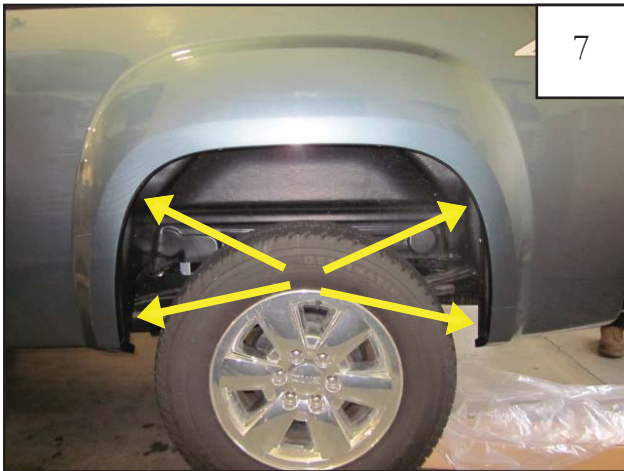
Pushing upward on the flare to ensure proper positioning, use a grease pencil to mark four hole locations. Remove screws installed in Step 3 and remove flare.



Four marked hole locations.



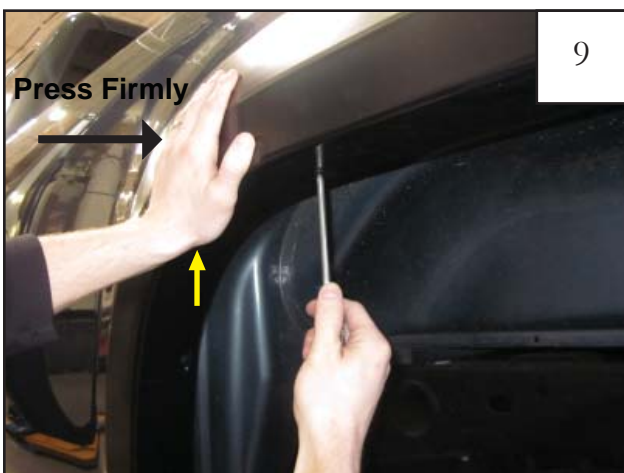
Center a supplied Tab (MT1-0014) over the four marks made in Step 4, aligning edge of Tab with outside edge of fender lip. Fold around back edge of fender lip and press firmly to adhere.



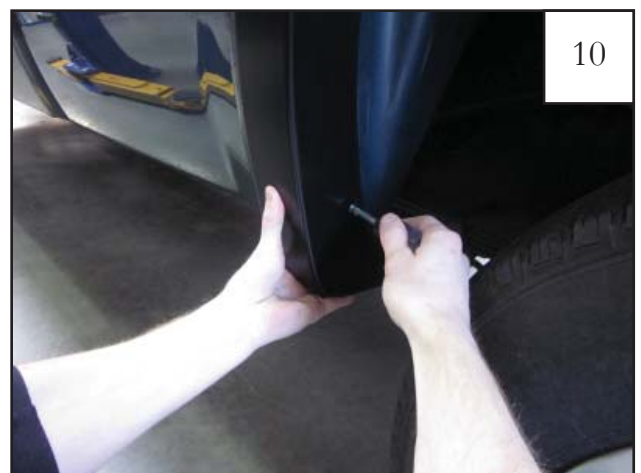
Tab locations.



Slide a supplied Clip (CL1-0005) over each Tab. Clips may need to be adjusted to align with holes in flare.



Reposition flare on fender. Check that flare is positioned correctly around wheel well. If not, adjust before tightening screws. Start a supplied screw (SW1-0058) through the two uppermost holes in the flare and into each clip installed in Step 2. *Firmly* press the flare up and toward the vehicle while tightening both screws.

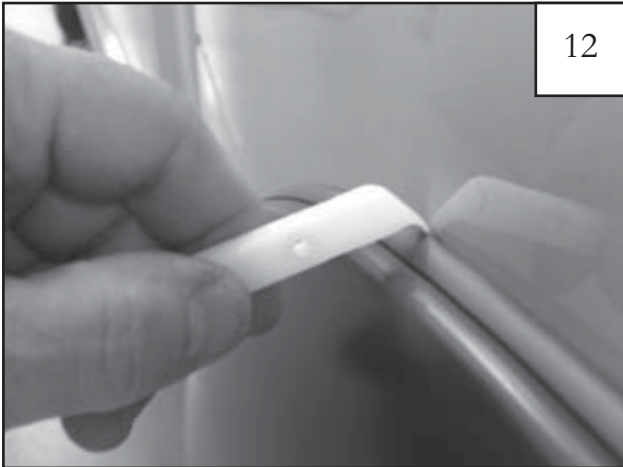


Start a supplied Screw (SW1-0050) through each of the remaining holes and into each Clip installed in Step 8. If needed, use scratch awl (or similar pointed tool) to locate holes. Tighten all screws.



Completed rear flare installation.

## Edge Trim Tool Procedures:



Using supplied Edge Trim Tool (ET1-0002), seat edge trim against vehicle by hooking curved end under edge trim at one end of flare. Next, slide around outer edge of flare to the other end.



Using flat end of supplied Edge Trim Tool (ET1-0002), seat edge trim against flare by inserting straight end between edge trim and flare at one end. Next, slide around entire edge to the other end.