



STEP 1 – PRIOR TO INSTALLATION

- A) Bushwacker only** approves installing the flares according to these written instructions with the hardware provided. **WARNING:** Failure to install according to these instructions will invalidate the warranty. This includes, but is not limited to using alternative installation methods, hardware, or materials. **DO NOT USE:** Loctite, SuperGlue, or similar products on the hardware or the flares.
- B) Fit:** Verify the fit of the flares to vehicle. (Some filing, sanding, or cutting may be necessary to ensure proper fit).
- C) Painting:** (Optional) if paint is desired it must be done prior to installing flares on vehicle. Clean outer surface with a good grade degreaser. **DO NOT USE LACQUER THINNER OR ENAMEL REDUCER AS A DEGREASER.** Wipe outer surface thoroughly with a tack rag prior to paint. Application of plastic adhesion promoter for ABS plastic as per your paint system manufacturer's recommendations is required. Paint flares using a high quality enamel, or polyurethane automotive paint. If painting edge trim (not recommended), use a flex additive.
- D) Performance:** Using larger Tires may increase the area required to turn the vehicle. Some Tire/Rim combinations may require lowering bump stops and or installing steering stops to prevent tire from contacting flare.
- E) Exhaust System:** Modifications may be necessary to maintain a minimum 4" clearance between flares and exhaust pipes. (Exhaust gases should not vent directly onto flares)
- F) Metal Protection:** All exposed fasteners and bare metal should be treated with rust resistant paint **BEFORE** installing flares. Spray inner fender wells with undercoating **AFTER** flare attachments have been completed.
- G) Decals:** Flares may interfere with existing decals on vehicle. If you wish, remove decals prior to installation of flares.

Chevrolet Pocket Style[®] Fender Flares Set of 4

Set Part #40937-02

Rev-6 9/6/2013

For complete fitment info visit : www.bushwacker.com

TOOLS FOR EASY INSTALLATION:

- Utility Knife
- Electric Drill
- 5/16" Drill Bit
- #2 Phillips Driver
- Socket Wrench
- 1/2" Socket
- 7mm Socket
- Awl (or similar pointed tool)

LIMITED LIFETIME WARRANTY AGAINST ANY MANUFACTURING DEFECTS

- To claim a warranty, you must provide Proof of Purchase.

Included in Hardware Kit:

- | | | | | | | |
|--|--|--|--|--|--|---|
| 1. 
CL1-0008,
1" Dacromet
Inner Clip,
8 pcs | 2. 
CL1-0010,
Dacromet Outer
Clip,
8 pcs | 3. 
RV1-P006,
8 x 20mm Black
Nylon Retainer,
14 pcs | 4. 
SW1-0049,
10 x 3/4" Phillips
Tapping Screw,
8 pcs | 5. 
WA1-0014,
#10 SAE SS Black
1/2" Flat Washer,
8 pcs | 6. 
MT1-0001,
1" x 1" x .002"
Mylar Tab,
16 pcs | 7. 
SW1-0067,
5/16 x 18 x 3/8"
SS Torx Screw,
36 pcs |
| 8. 
WA1-0012,
.320 x .700 x .03
SS Washer,
36 pcs | 9. 
NU1-0019,
5/16-18 Jam Fin.
Nylock Nut,
36 pcs | 10. 
SW1-0052,
T-45 Torx Bit,
1 pc | 11. 
ET1-0002,
Edge Trim Tool,
1 pc | 12. 
GP1-0005,
Large Wiper Style
Edge Trim,
322 inches | | |

STEP 2 - EDGE TRIM INSTALLATION

- A)** Peel two to three inches of red vinyl backing away from Edge Trim (GP1-0005) tape. Applying the adhesive side of the edge trim to the inner side of the flare, affix the edge trim to the top edge of the flare (the portion that comes in contact with the vehicle).
- B)** Press edge trim into place along the top edge of the flare in one-foot increments, pulling red vinyl backing free as you continue to work your way around the top edge of the flare.



Pocket Hardware Installation:



Put a Washer (WA1-0012) on each Bolt (SW1-0059).



Put each Bolt/Washer combination through a pocket hole in the flare, Bolt head and Washer on the outside.



Place a Nut (NU1-0019) over the end of each Bolt and tighten, using a 1/2" wrench for the Nut and the supplied Torx Bit (SW1-0052) for the Bolt. Repeat for remaining pockets.

Front Flare Installation Procedures (Driver's Side):



Using a 7mm socket, remove two factory screws. Retain screws for later use.



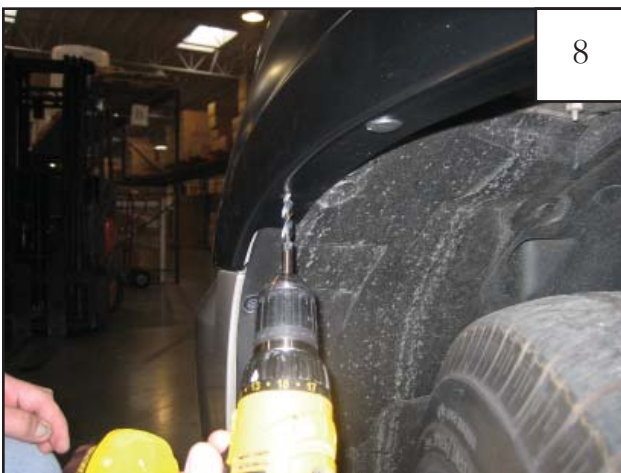
Holding flare in position on fender, reinstall factory screws removed in Step 4. If necessary, use awl (or similar pointed tool) to locate holes.



Install two supplied Retainers (RV1-P006).



Retainer locations.



Using hole located in forward portion of flare as a guide, drill through the splash shield with a 5/16" bit. Holes in flare and splash shield should align with factory hole located in fender.



Install a supplied Retainer (RV1-P006) through forward hole in flare.

Rear Flare Installation Procedures (Driver's Side):



For the Rear Driver's side with gas door cut out only: In the area of the cut out, use a knife to trim the backside of the edge trim at the center as shown.



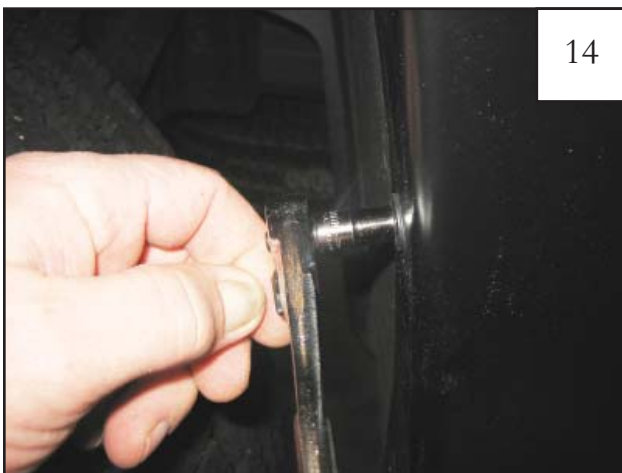
Carefully peel cut portion of edge trim and discard. This will prevent the edge trim from interfering with the gas door.



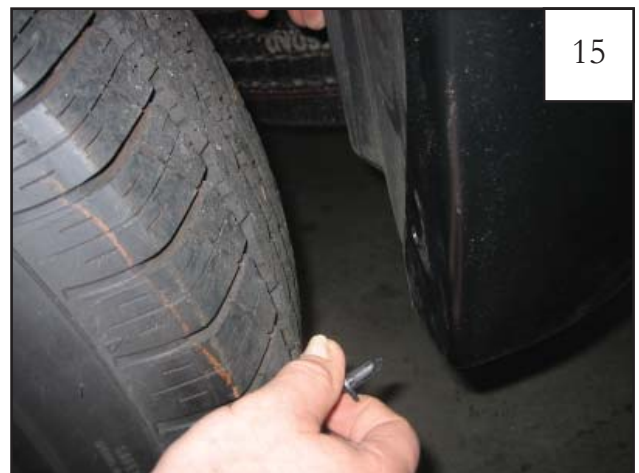
Using a flat head screw driver, remove one factory plastic retainer and discard.



Using a 7mm socket, remove six factory screws. Retain screws for later use.



Holding flare in position on fender, reinstall three screws as shown in Step 13.

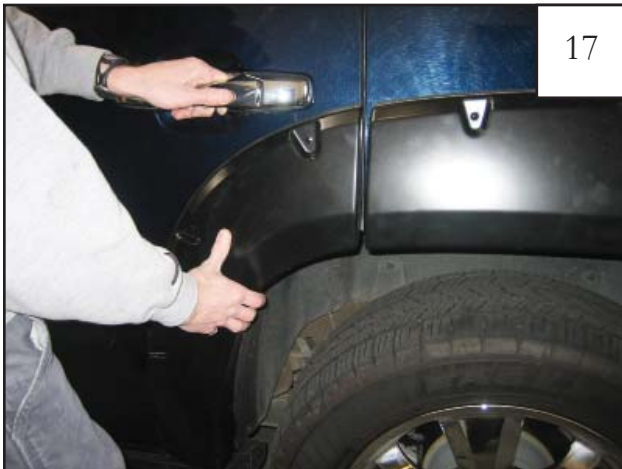


Install supplied Retainers (RV1-P006) in remaining holes in flare.

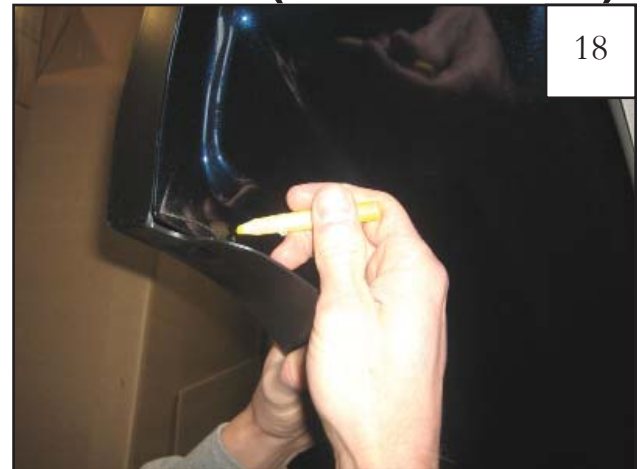


Retainer locations.

Rear Door Piece Installation Procedures (Driver's Side):



Position Door Piece correctly on door using Rear Flare as a guide.



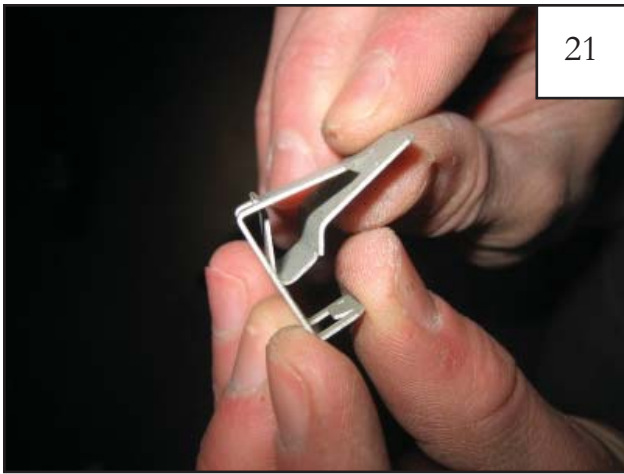
Using a grease pencil, mark four hole locations on the inside of the door by aligning the marks with the holes in flare.



Apply a supplied Tab (MT1-0001) to the inside of the door, centering tabs over the marks made in Step 18 (4 places).



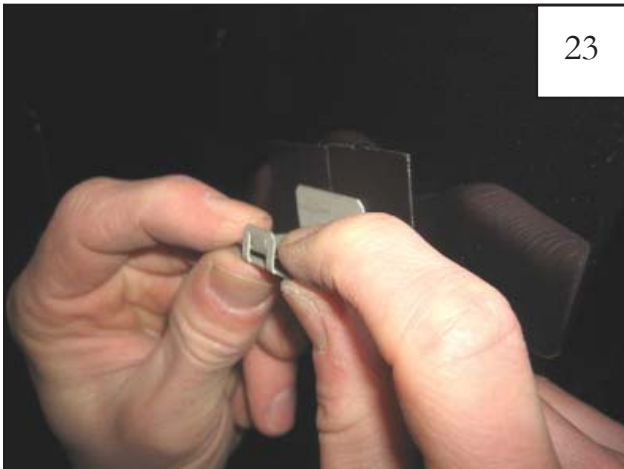
Apply corresponding Tabs (MT1-0001) on the outside of the door, aligning with Tabs applied in Step 19.



Slide Clip (CL1-0008) into Clip (CL1-0010) as shown. *Do not snap clips shut.*



Slide Clips over Tabs installed in Steps 19 and 20.



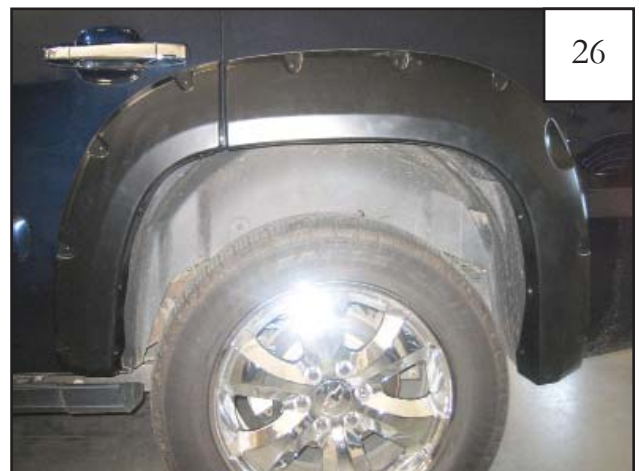
Snap Clips shut once positioned. If adjustments are needed, Clips can be moved slightly in either direction.



Slide a supplied Washer (WA1-0014) onto a supplied Screw (SW1-0049).

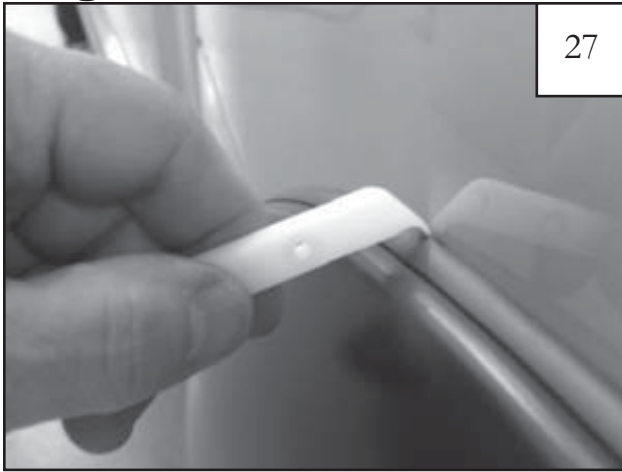


Replace the Door Piece on the door, aligning holes in door piece with holes in Clips. Start four Screw/Washer assemblies but *do not tighten*.

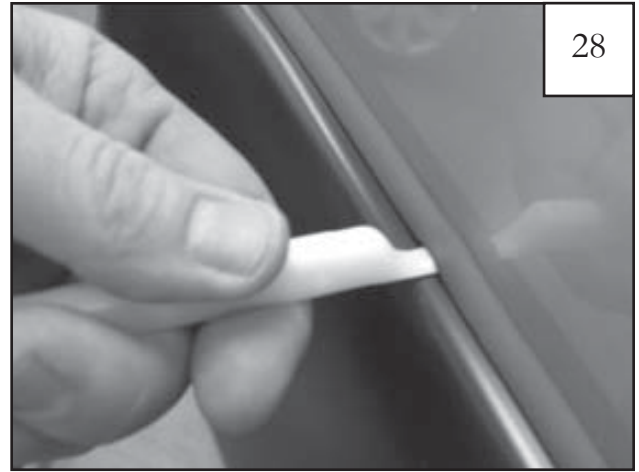


Verify placement of Door Piece, and tighten all screws.

Edge Trim Tool Procedures:



Using supplied Edge Trim Tool (ET1-0002), seat edge trim against vehicle by hooking curved end under edge trim at one end of flare. Next, slide around outer edge of flare to the other end.



Using flat end of supplied Edge Trim Tool (ET1-0002), seat edge trim against flare by inserting straight end between edge trim and flare at one end. Next, slide around entire edge to the other end.