

### STEP 1 – PRIOR TO INSTALLATION

- A) Bushwacker only** approves installing the flares according to these written instructions with the hardware provided. **WARNING:** Failure to install according to these instructions will invalidate the warranty. This includes, but is not limited to using alternative installation methods, hardware, or materials. **DO NOT USE:** Loctite, SuperGlue, or similar products on the hardware or the flares.
- B) Fit:** Verify the fit of the flares to vehicle. (Some filing, sanding, or cutting may be necessary to ensure proper fit).
- C) Painting:** (Optional) if paint is desired it must be done prior to installing flares on vehicle. Clean outer surface with a good grade degreaser. **DO NOT USE LACQUER THINNER OR ENAMEL REDUCER AS A DEGREASER.** Wipe outer surface thoroughly with a tack rag prior to paint. Application of plastic adhesion promoter for ABS plastic as per your paint system manufacturer’s recommendations is required. Paint flares using a high quality enamel, or polyurethane automotive paint. If painting edge trim (not recommended), use a flex additive.
- D) Performance:** Using larger Tires may increase the area required to turn the vehicle. Some Tire/Rim combinations may require lowering bump stops and or installing steering stops to prevent tire from contacting flare.
- E) Exhaust System:** Modifications may be necessary to maintain a minimum 4” clearance between flares and exhaust pipes. (Exhaust gases should not vent directly onto flares)
- F) Metal Protection:** All exposed fasteners and bare metal should be treated with rust resistant paint **BEFORE** installing flares. Spray inner fender wells with undercoating **AFTER** flare attachments have been completed.
- G) Decals:** Flares may interfere with existing decals on vehicle. If you wish, remove decals prior to installation of flares.

## RAM “OE” Style® Fender Flares Front Pair

Front Part #50043-02

Rev-4 10/10/2013

For complete fitment info visit : [www.bushwacker.com](http://www.bushwacker.com)

### TOOLS FOR EASY INSTALLATION:

- Utility Knife
- Drill
- 1/8” Drill Bit
- #2 Phillips Driver
- Socket Wrench
- 8 mm Socket
- 3/8” Wrench
- Awl or Similar Pointed Tool

### LIMITED LIFETIME WARRANTY AGAINST ANY MANUFACTURING DEFECTS

- To claim a warranty, you must provide Proof of Purchase.

## Included in Hardware Kit:

- |   |  |   |   |  |   |   |
|---|--|---|---|--|---|---|
| 1.<br><br>CL1-0001,<br>.185-.225<br>SS “U” Clip,<br>4 pcs          | 2.<br><br>CL1-0022,<br>#10 “U” Clip,<br>2 pcs           | 3.<br><br>ET1-0002,<br>Edge Trim Tool,<br>1 pc | 4.<br><br>GP1-0005,<br>Large Wiper Style<br>Edge Trim,<br>135 inches | 5.<br><br>MT1-0014,<br>1” x1.5” x.01”<br>Black Tab,<br>8 pcs | 6.<br><br>NU1-0004,<br>10-24 Nylon Nut,<br>2 pcs | 7.<br><br>SW1-0003,<br>10-24 x 3/4”<br>Phillips PH Screw,<br>2 pcs |
| 8.<br><br>SW1-0050,<br>10 x 5/16 Phillips<br>Truss Screw,<br>2 pcs | 9.<br><br>SW1-0056,<br>#8 x 3/4”<br>PH Screw,<br>10 pcs |   |   |  |   |   |

## STEP 2 - EDGE TRIM INSTALLATION

A. Peel two to three inches of red vinyl backing away from Wiper Style Edge Trim tape (GP1-0005). Applying the adhesive side of the edge trim to the inner side of the flare, affix the edge trim to the top edge of the flare (the portion that comes in contact with the vehicle).

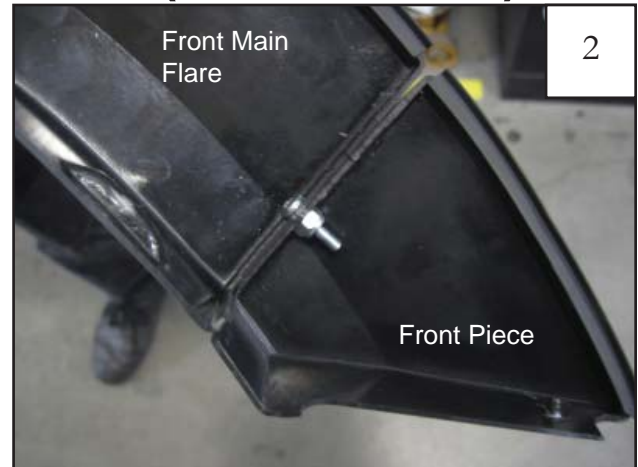
B. Press edge trim into place along the top edge of the flare in one-foot increments, pulling red vinyl backing free as you continue to work your way around the top edge of the flare.



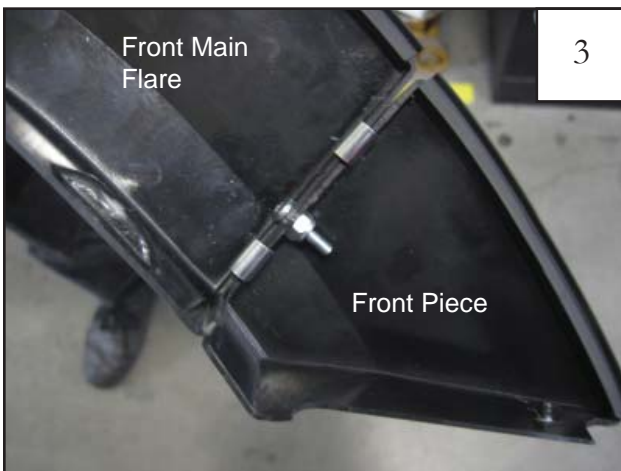
## Front Flare Installation Procedures (Driver's Side):



Using dimple in front piece as a guide, drill a 1/8" hole and install a #14x1/2" Phillips Truss Tap Screw through the drilled hole.



Bolt front main flare and front pieces together with #10-24x3/4" Phillips Pan Machine Screw and #10-24x3/8" Nylock Nut. Use a 3/8" wrench to hold #10-24x3/8" Nylock Nut in place.



Secure pieces with two SS U-Clips to prevent rotation out of alignment after installation.

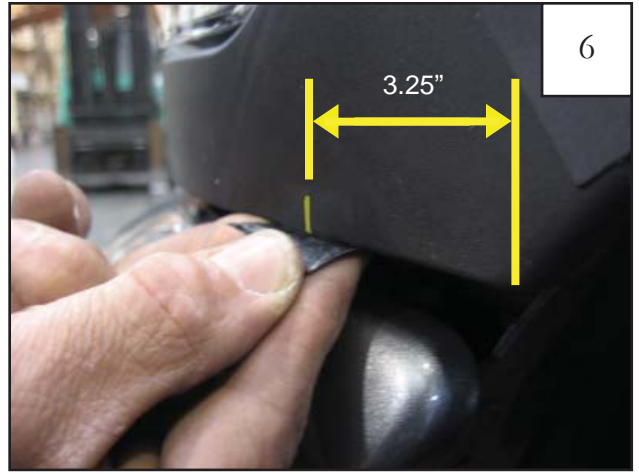


Install two 1"x1.5" Black Tabs over seam between main vehicle body and headlight mounting.



5

Take one 1"x1.5" Black Tab and bend it at an approximately 90 degree angle.



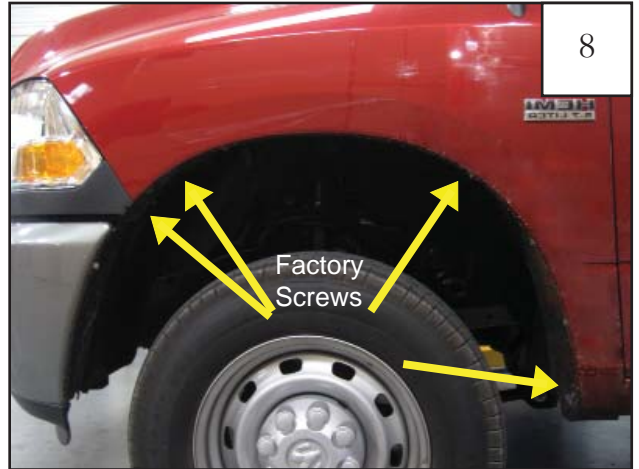
6

Measure 3.25" from wheel well along headlight mounting and mark with a grease pencil. Remove white backing from 1"x1.5" Black Tab. Center tab at mark, hook around lip, and install.



7

All three 1"x1.5" Black Tabs.



8

Remove four factory installed screws with 8 mm socket wrench.



9

**2011 Models Only:** Remove inner piece at bottom rear of wheel well.



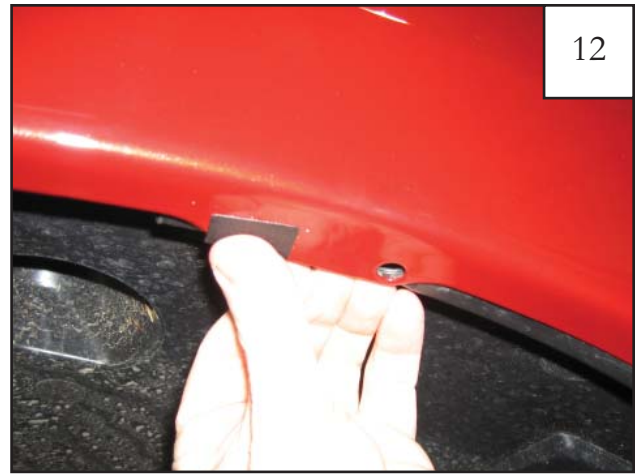
10

Install #10 U-Clip at this location. See step 11, 12, 13, & 14.



11

At location indicated in step 10, there is a lip with two factory holes. One hole is a circle and one is an oval. The 1"x1.5" Black Tab and #10 U-Clip will be installed over the oval. The oval is the hole more toward the front of the vehicle.



12

Install 1"x1.5" Black Tab over existing factory hole.



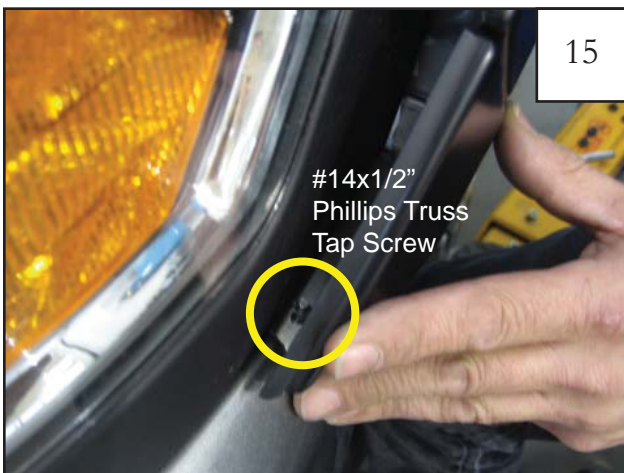
13

Install #10 U-Clip over 1"x1.5" Black Tab.



14

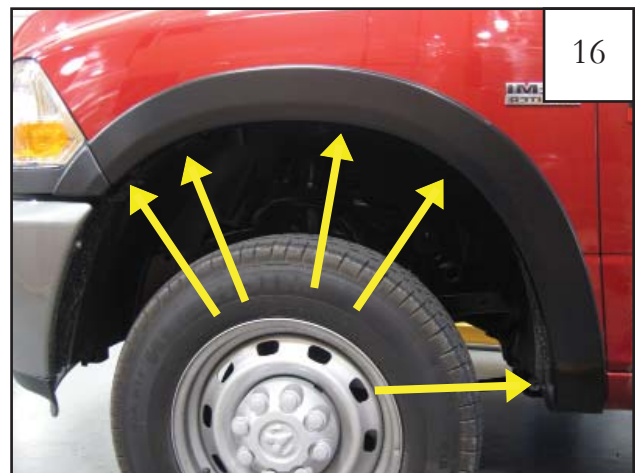
Using an awl or similar pointed tool, poke a hole through 1"x1.5" Black Tab using the #10 U-Clip hole as a guide.



15

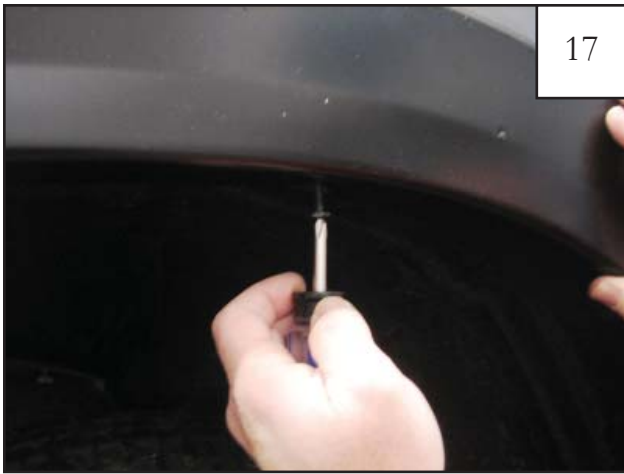
#14x1/2"  
Phillips Truss  
Tap Screw

When fitting flare on vehicle, first position front piece. The #14x1/2" Phillips Truss Tap Screw hooks behind where folded 1"x1.5" Black Tab was installed in step 6.

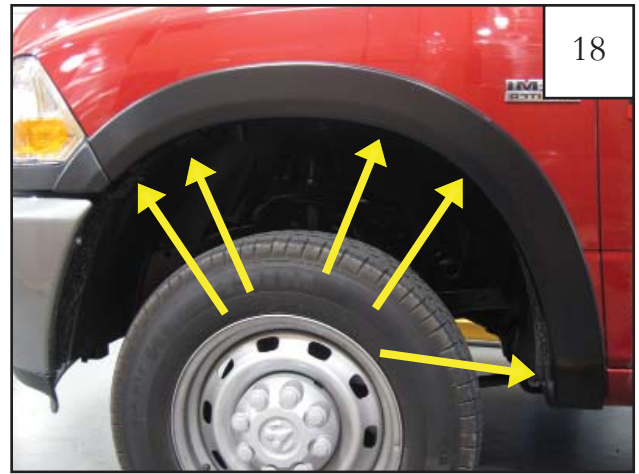


16

Kit supplied screw locations. See step 17.



Hold flare to vehicle and start the kit supplied #8x3/4" Washer Panhead Screws with a Phillips screwdriver. *Do not tighten.*

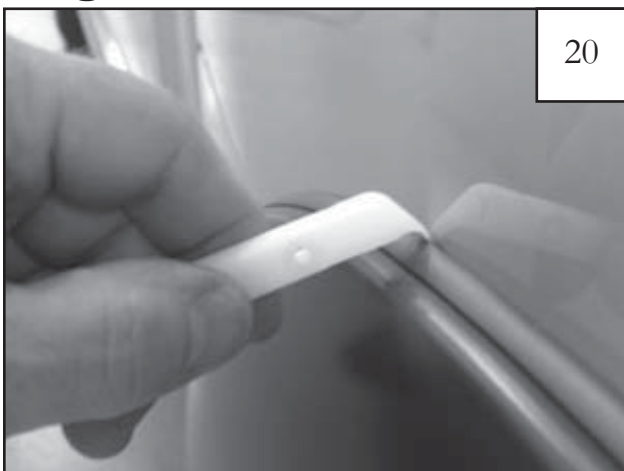


Press firmly on flare and tighten all screws.



Completed front flare installation.

## Edge Trim Tool Procedures:



Using supplied Edge Trim Tool, seat Wiper Style Edge Trim against vehicle by hooking curved end under edge trim at one end of flare. Next, slide around outer edge of flare to the other end.



Using flat end of supplied Edge Trim Tool, seat edge trim against flare by inserting straight end between edge trim and flare at one end. Next, slide around entire edge to the other end.